

ENGLISH

OPERATING INSTRUCTIONS & SPARE PARTS LIST

PETROL DRIVE UNIT DU PETROL



M100040.P - DU PETROL

MAY 2023



LIMITED WARRANTY

We warrant that this product is **free from defects in material or workmanship** under normal use and maintenance. Certain components, such as normal wear parts and engines are excluded from this warranty. We will, at our option, repair or replace any defective product or part covered by the Limited Warranty, free of charge at any authorized Servicing Dealer/Center using original replacement parts, subject to the limitations and exclusions described below.

Limited Warranty period: We will warrant the product to the original retail purchaser from the date of retail purchase for 12 month.

Battery: Lead Acid Batteries only: 180 days

This Limited Warranty does not cover:

- (a) Engines; a separate warranty provided with your product might apply.
Engines are warranted by the engine manufacture
- (b) Normal wear parts (parts and items that normally wear out with use), including without limitation spark plugs, bulbs, filters, lubricants, starter cords, belts, rubber parts, blades, and blade adapters are not covered, nor is damage due to normal wear, natural discoloration of materials, or dulling or damage to blades due to contact with abrasives, rocks, rods, or other foreign objects.
- (c) Damage related to abuse, misuse, neglect, modifications, alterations, use of unauthorized attachments, improper storage, or lack of lubrication or engine failure due to the use of oils that do not meet engine manufacturer's specifications, pressure cleaning or steam cleaning the product, excessive dirt, abrasives, salt water, moisture, corrosion, rust, or varnish.
- (d) Failure to perform required maintenance as described in the operator's manual will void this warranty.
- (e) Damage or failures due to improper set up, pre-delivery service or repair service by anyone other than an authorized servicing dealer during the warranty period.

To preserve your rights under this Limited Warranty, you must exercise reasonable care and use of the product, including following the preventive maintenance, storage, and fuel and oil usages as prescribed in the operator's manual.

In addition, you must cease using the product immediately upon any failure or damage, and take the product to an authorized servicing dealer prior to any further use.

WARRANTY EXCLUSIONS, DISCLAIMERS, AND LIMITED RIGHTS. WE WILL NOT BE LIABLE FOR ANY INCIDENTAL OR CONSEQUENTIAL DAMAGES. YOUR REMEDY IS LIMITED TO REPAIR OR REPLACEMENT OF THE PRODUCT OR PART, AT OUR DISCRETION. THERE ARE NO EXPRESS WARRANTIES OTHER THAN THOSE SET FORTH HEREIN. ANY WARRANTY IMPLIED BY STATE LAW (WHETHER OF MERCHANTABILITY OR FITNESS FOR A PARTICULAR USE OR OTHERWISE) IS HEREBY DISCLAIMED; WHERE SUCH A DISCLAIMER IS NOT PERMITTED BY LAW, THEN SUCH IMPLIED WARRANTY IS LIMITED FOR THE DURATION OF THE APPLICABLE LIMITED WARRANTY PERIOD. THIS LIMITED WARRANTY GIVES YOU SPECIFIC LEGAL RIGHTS, AND YOU MAY ALSO HAVE OTHER RIGHTS BASED ON YOUR LOCALITY.

How to obtain service. To obtain warranty service, you must take your product to an authorized Servicing Dealer/Center.

Any costs to transport or ship the product are your responsibility. You must present proof of purchase (including date, product model and serial number) to an authorized Servicing Dealer/Center for warranty service. Proof of purchase rests solely with you.

EURO SHATAL ApS

Head Office: Murervej 5, DK-6710 Esbjerg V, Denmark

Phone: (45) 75 168411 - Fax: (45) 75 168412 – E-Mail: euroshatal@shatal.com



GX models

GENERAL STORAGE INFORMATION

- If the engine has been running, allow it to cool for at least half an hour before cleaning. Clean all exterior surfaces, touch up any damaged paint, and coat other areas that may rust with a light film of oil.
- Select a well-ventilated storage area away from any appliance that operates with a flame, such as a furnace, water heater or clothes dryer.
- Avoid any area with a spark producing electric motor or where power tools are operated.
- If possible, avoid any area with high humidity. Humidity promotes rust and corrosion.
- Position the equipment so that the engine is level. Tilting the engine can cause fuel or oil leakage.
- If the engine is equipped with a battery, remove the battery and store it in a cool dry place. Recharge the battery once a month while the engine is in storage. This will help to extend the service life of the battery.

Draining the fuel tank and carburetor for seasonal or long term storage

You can either run your equipment until the fuel system (including the fuel tank) is completely empty or you can drain the fuel system as follows:

- Disconnect the fuel line to the engine, and drain the fuel tank into an approved gasoline container.
- If the fuel tank is equipped with a valve, turn the fuel valve to OPEN or ON position to enable draining.
- After draining is completed, reconnect the fuel line and turn the fuel valve to the OFF position.
- Loosen the carburetor drain screw, and drain the carburetor into an approved gasoline container. After draining is completed, tighten the carburetor drain screw.

EURO SHATAL ApS

Head Office: Murervej 5, DK-6710 Esbjerg V, Denmark

Phone: (45) 75 168411 - Fax: (45) 75 168412 – E-Mail: euroshatal@shatal.com



CE DECLARATION	1
SAFETY RULES	2;3
OPERATION	4
INSTRUCTION FOR ORDERING PARTS	5
DRIVE UNIT ASSEMBLY	6;7
SPARE PART LIST	8



ENGLISH



CE DECLARATION OF CONFORMITY

We hereby declare that the equipment described below conforms to the relevant fundamental safety and health requirements of the appropriate CE Directives, both in its basic design and construction. This declaration will cease to be valid if any modifications are made to the machine without our expressed approval.

Product: Drive Unit Models : DU PETROL

Relevant CE Machinery Safety Directives : (89/392/EEC)

amended by 91/368/EEC, 93/44/EEC, 2004/108/EC ,EN500-1, EN500-4

Appropriate internal measures have been taken to ensure that series-production units conform at all times to the requirements of current CE Directives and relevant standards.

The signatories are empowered to represent and act on behalf of the company's management.

**Murervej 5
DK-6710 Esbjerg V , Denmark
Tel:(+45) 75168411
Fax: (+45)75168412
E-mail:euroshatal@shatal.com**

GENERAL MANAGER



SAFETY INSTRUCTION-QUICK GUIDE

DRIVE UNIT DU PETROL



Use unleaded fuel only, for gasoline engines.



Users should carefully follow any operating instructions given.



. Hearing protection must be worn.



Foot protection must be worn.



Ensure that the vibrator does not come into contact with fixed surfaces.
Ensure that the flexible tube does not come into contact with hot or sharp surfaces.



Stay Alert! Watch what you are doing.
Use common sense.
NEVER operate the vibrator motor when you are tired or while under the influence of drugs, alcohol, or medication.



Replace worn or damaged parts with replacement parts designed and Recommended for use by Euro Shatal.



Any servicing, other than that covered in this instruction manual, should be performed by an authorized Euro Shatal Service Representative.

SAFETY INSTRUCTION-QUICK GUIDE

DRIVE UNIT DU PETROL



Do not operate the machine in closed places and inflammable environments.



Operate the machine only with good lighting conditions.



Do not touch hot surfaces.



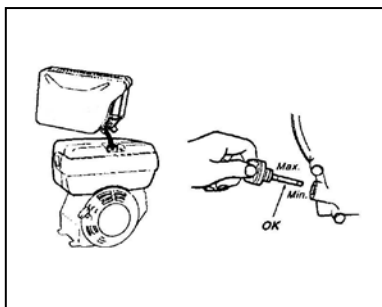
Store in a dry place, not accessible to children. Maintain the tools carefully.

OPERATION

Technical Data

Motors		Petrol
Voltage (AC)	V	NA
Current (Maximum)	A	NA
Frequency	Hz	NA
Power	Hp	5.5 Hp
Speed (No-load)	rpm	3600
Motor	type	Honda Gx160
Phase		NA
Weight	Kg. (lbs.)	28 kg

BEFORE STARTING :



1. Fill fuel tank.
2. Check oil level in engine crankcase and top up if necessary use the type of oil according to the manufacturer's instructions.

MACHINE OPERATION :

1. Run the engine at slow speed.
2. Raise the knob on the aluminum housing. Push the vibrator coupling into the housing and then release the knob.
3. Ensure that the vibrator is securely held by the housing
4. Move the throttle to maximum speed. If the vibrator does not vibrate hit the end of the vibrator on the floor until it vibrates.
5. The vibrator must always be vibrating while in the concrete.
Do not stop the vibrator while it is in concrete.

Please State Machine Details in the Following Sequence:

- ☐ **Machine Serial Number**
- ☐ **Part Number, Description and Quantity of Parts**
- ☐ **Full Delivery Address**

Manufacturers Liability and the Use of Genuine Spare Parts

Liability for this machine is accepted only when the machine is defective from the outset. Liability is reduced or nullified in the event that the user fails to comply with the operating and maintenance instructions and uses spare parts which are not guaranteed.

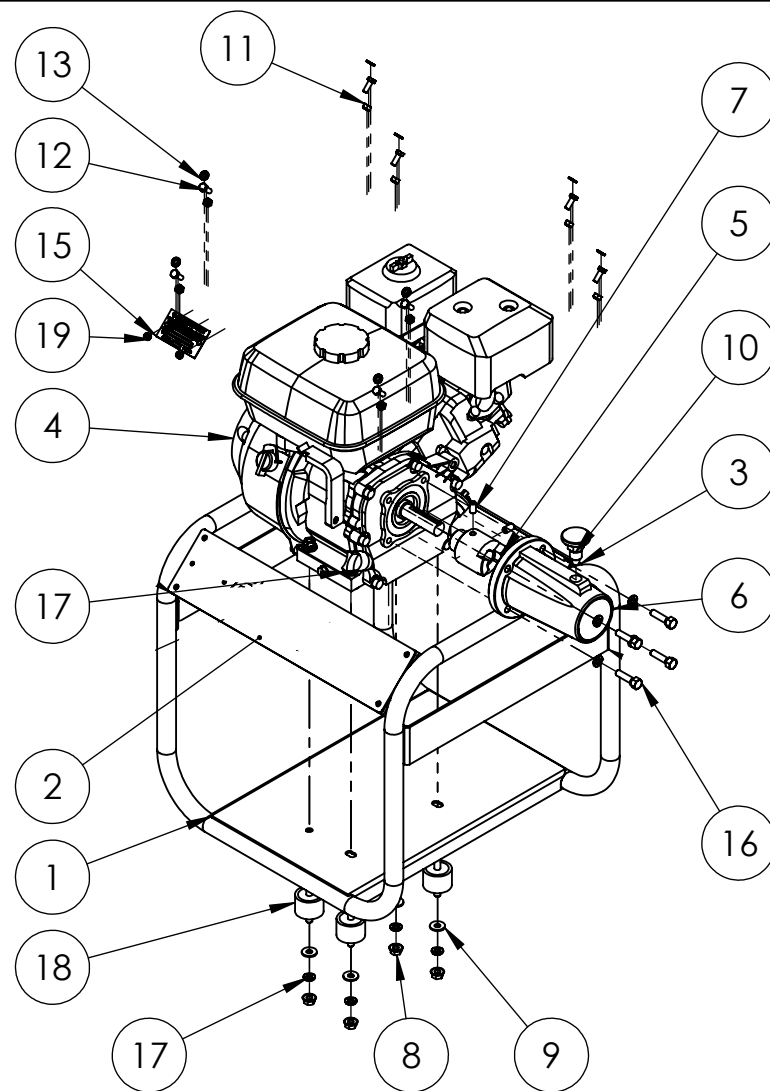
Contents

Drive Unit DU PETROL Assembly ----- 6-8

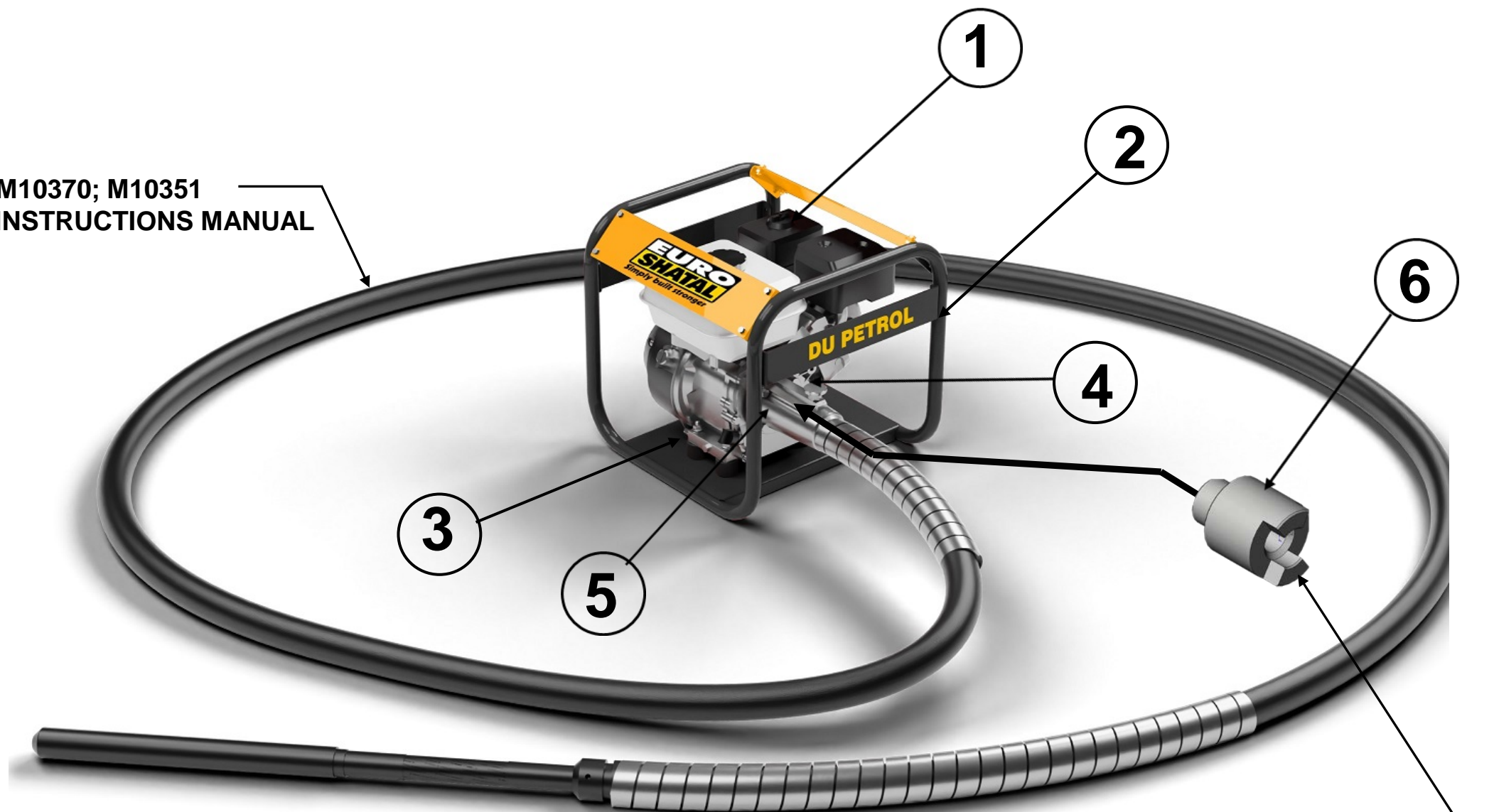


DRIVE UNIT ASSEMBLY
DU PETROL
FIRST EDITION MAY 2023

19	321948	BLIND RIVET Ø5X16	2
18	30401.1	ANTI VIBRATION MTG 40 SHOR JIP LONG	4
17	1171902	SPRING LOCK WASHER M8 ZINC PLATE	12
16	1000902	HEX HEAD SCREW 5/16-1-1.25" ZINC PLA	4
15	Z000000430	NAME PLATE	1
13	1171909	SPRING LOCK WASHER M6 ZINC PLATE	8
12	1171914	HEX HEAD SCREW M6X16 ZINC PL.	8
11	313967	HEX NUT M6 ZINC PLATED	8
10	10095	KNOB LOCKING	1
9	115903	PLAIN WASHER 21X9X3 ZINC PLATED	12
8	115901	HEX NUT M8 ZINC PLATED	8
7	321941	HEX SOC.SET SCR.W.CONE POI M8x10	2
6	10261	ALUMINIUM COUPLING	1
5	10009	Coupling A (19)	1
4	I50200.IN	HONDA ENGINE GX160 QX 3/4"	1
3	1000501	TOP PLATE - NO HOLE	1
2	1000502	TOP PLATE - HOLE	1
1	1000500	CAGE - HONDA GX160	1
ITEM NO.	PART NO	DESCRIPTION	QTY.



M10353; M10370; M10351
SEE VIBRATORS INSTRUCTIONS MANUAL



ENGINE SHAFT COUPLING SITUATED
INSIDE OUTER COUPLING PART



PETROL DRIVE UNIT ASSEMBLY
DU PETROL

NO.	DESCRIPTION	PART NO.	QTY.
1	PETROL ENGINE HONDA GX160 QX 3/4"	I50200.IN	1
2	FRAME	1000500	1
3	ANTIVIBRATION MOUNTING	30401.1	4
4	COUPLING RETAINER	10095	1
5	OUTER COUPLING	10261	1
6	ENGINE SHAFT COUPLING	10009	1