

ENGLISH

OPERATING INSTRUCTIONS & SPARE PARTS LIST DRIVE UNIT DU ELECTRIC



M 100040.E – DU ELECTRIC

MAY 2023



LIMITED WARRANTY

We warrant that this product is **free from defects in material or workmanship** under normal use and maintenance. Certain components, such as normal wear parts and engines are excluded from this warranty. We will, at our option, repair or replace any defective product or part covered by the Limited Warranty, free of charge at any authorized Servicing Dealer/Center using original replacement parts, subject to the limitations and exclusions described below.

Limited Warranty period: We will warrant the product to the original retail purchaser from the date of retail purchase for 12 month.

Battery: Lead Acid Batteries only: 180 days

This Limited Warranty does not cover:

- (a) Engines; a separate warranty provided with your product might apply.
Engines are warranted by the engine manufacture
- (b) Normal wear parts (parts and items that normally wear out with use), including without limitation spark plugs, bulbs, filters, lubricants, starter cords, belts, rubber parts, blades, and blade adapters are not covered, nor is damage due to normal wear, natural discoloration of materials, or dulling or damage to blades due to contact with abrasives, rocks, rods, or other foreign objects.
- (c) Damage related to abuse, misuse, neglect, modifications, alterations, use of unauthorized attachments, improper storage, or lack of lubrication or engine failure due to the use of oils that do not meet engine manufacturer's specifications, pressure cleaning or steam cleaning the product, excessive dirt, abrasives, salt water, moisture, corrosion, rust, or varnish.
- (d) Failure to perform required maintenance as described in the operator's manual will void this warranty.
- (e) Damage or failures due to improper set up, pre-delivery service or repair service by anyone other than an authorized servicing dealer during the warranty period.

To preserve your rights under this Limited Warranty, you must exercise reasonable care and use of the product, including following the preventive maintenance, storage, and fuel and oil usages as prescribed in the operator's manual.

In addition, you must cease using the product immediately upon any failure or damage, and take the product to an authorized servicing dealer prior to any further use.

WARRANTY EXCLUSIONS, DISCLAIMERS, AND LIMITED RIGHTS. WE WILL NOT BE LIABLE FOR ANY INCIDENTAL OR CONSEQUENTIAL DAMAGES. YOUR REMEDY IS LIMITED TO REPAIR OR REPLACEMENT OF THE PRODUCT OR PART, AT OUR DISCRETION. THERE ARE NO EXPRESS WARRANTIES OTHER THAN THOSE SET FORTH HEREIN. ANY WARRANTY IMPLIED BY STATE LAW (WHETHER OF MERCHANTABILITY OR FITNESS FOR A PARTICULAR USE OR OTHERWISE) IS HEREBY DISCLAIMED; WHERE SUCH A DISCLAIMER IS NOT PERMITTED BY LAW, THEN SUCH IMPLIED WARRANTY IS LIMITED FOR THE DURATION OF THE APPLICABLE LIMITED WARRANTY PERIOD. THIS LIMITED WARRANTY GIVES YOU SPECIFIC LEGAL RIGHTS, AND YOU MAY ALSO HAVE OTHER RIGHTS BASED ON YOUR LOCALITY.

How to obtain service. To obtain warranty service, you must take your product to an authorized Servicing Dealer/Center.

Any costs to transport or ship the product are your responsibility. You must present proof of purchase (including date, product model and serial number) to an authorized Servicing Dealer/Center for warranty service. Proof of purchase rests solely with you.

EURO SHATAL ApS

Head Office: Murervej 5, DK-6710 Esbjerg V, Denmark

Phone: (45) 75 168411 - Fax: (45) 75 168412 – E-Mail: euroshatal@shatal.com



CE DECLARATION	1
SAFETY RULES	2;3;4
OPERATION	5
INSTRUCTION FOR ORDERING PARTS	6
DRIVE UNIT ASSEMBLY	7;8
SPARE PART LIST	9

CE DECLARATION OF CONFORMITY

We hereby declare that the equipment described below conforms to the relevant fundamental safety and health requirements of the appropriate CE Directives, both in its basic design and construction. This declaration will cease to be valid if any modifications are made to the machine without our expressed approval.

Product: Drive Unit Models : DU ELECTRIC

Relevant CE Machinery Safety Directives : (89/392/EEC)

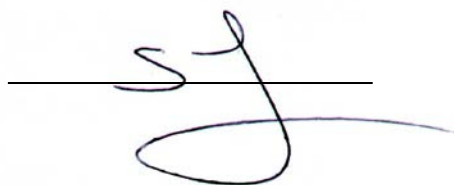
amended by 91/368/EEC, 93/44/EEC, 2004/108/EC ,EN500-1, EN500-4

Appropriate internal measures have been taken to ensure that series-production units conform at all times to the requirements of current CE Directives and relevant standards.

The signatories are empowered to represent and act on behalf of the company's management.

**Murervej 5
DK-6710 Esbjerg V , Denmark
Tel:(+45) 75168411
Fax: (+45)75168412
E-mail:euroshatal@shatal.com**

GENERAL MANAGER



SAFETY INSTRUCTION- QUICK GUIDE

DRIVE UNIT DU ELECTRIC

ELECTRIC MOTOR

ENGLISH



Laws governing safety aspects on machinery vary between countries but the following guides will be useful to all operators:



Before starting, carefully read the machine maintenance and operating manual and follow all the instructions.



Users should carefully follow any operating instructions given.



Do not operate the machine in closed places and inflammable environment.



Operating the machine is advisable only with good lighting conditions.



Ensure that the power supply is connected to an earth leakage circuit breaker.



DANGER OF ELECTROCUTION!

Danger of electrocution or severe electrical shock is present in the motor any time the motor is plugged in. Read all safety information contained in this section before operating or servicing this equipment.



No one except a trained electrician should perform repairs to the motor and switches.



NEVER allow anyone to operate this equipment without proper training.



Ensure that the vibrator does not come into contact with fixed surfaces.
Ensure that the flexible tube does not come into contact with hot or sharp surfaces.



NEVER carry the motor by the cord or pull on it to disconnect it from receptacle.
Keep cord away from heat, oil and sharp edges.

SAFETY INSTRUCTION- QUICK GUIDE

DRIVE UNIT DU ELECTRIC

ELECTRIC MOTOR

ENGLISH



Stay Alert! Watch what you are doing.

Use common sense.

NEVER operate the vibrator motor when you are tired or while under the influence of drugs, alcohol, or medication.



Replace worn or damaged parts with replacement parts designed and recommended for use by Euro Shatal.



Any servicing, other than that covered in this instruction manual, should be performed by an authorized Euro Shatal Service Representative.



ALWAYS store equipment properly when it is not being used.
Equipment should be stored in a clean, dry location out of the reach of children.



NEVER operate with damaged or worn electrical cord!
When using an extension cord be sure to use one heavy enough to carry the current load.



DO NOT operate electrical devices in rain or snow.
Keep motors, switch and electrical cords dry.



NEVER allow the vibrator to become entangled in the power cord.



ALWAYS check the power supply before running the vibrator.
Using the wrong voltage supply will damage the motor.



Only operate the machine with a fully earthed-plug, do not operate the machine in case of doubt.

SAFETY INSTRUCTION- QUICK GUIDE

DRIVE UNIT DU ELECTRIC

ELECTRIC MOTOR

ENGLISH



When operate the machine, always wear noise reduction ear protectors and safety glasses.



When operate the machine, always wear safety shoes and safety clothing.

OPERATION

Technical Data

Motors		Electric
Voltage (AC)	V	230 V, AC
Current (Maximum)	A	15.7
Frequency	Hz	50
Power	Hp	3
Speed (No-load)	rpm	2800
Motor	type	Branded
Phase		1 Ph
Weight	Kg. (lbs.)	28 kg

MACHINE OPERATION :

1. Switch the motor on and immediately switch it off.
2. While the motor is still spinning raise the knob on the aluminum housing.
Push the vibrator coupling into the housing and then release the knob.
3. Ensure that the vibrator is securely held by the housing.
4. Switch the motor on. If the vibrator does not vibrate hit the end of the vibrator on the floor until it vibrates.
5. The vibrator must always be vibrating while in the concrete. Do not stop the vibrator while it is in concrete.

EXTENSION CORDS

When choosing an extension cord, make sure it has adequate wire size for safety. An undersized cord will cause a drop in line voltage resulting in a loss of power and overheating. The table below shows the correct wire size to use depending on cord length. If in doubt, use the next heavier cord size. On motors being used outdoors, use extension cords rated for outdoor use.

Improper use of extension cords can cause overheating and create serious fire or shock hazards. NEVER use worn or damaged cords!

Extension cord length (meters)	Minimum extension cord size (mm²)
	400 V / 3Ø / 7.3 Amp
0-20	1.0
20-40	1.5
40-80	1.5
80-100	2.5

Please State Machine Details in the Following Sequence:

- ☐ Machine Serial Number
- ☐ Part Number, Description and Quantity of Parts
- ☐ Full Delivery Address

Manufacturers Liability and the Use of Genuine Spare Parts

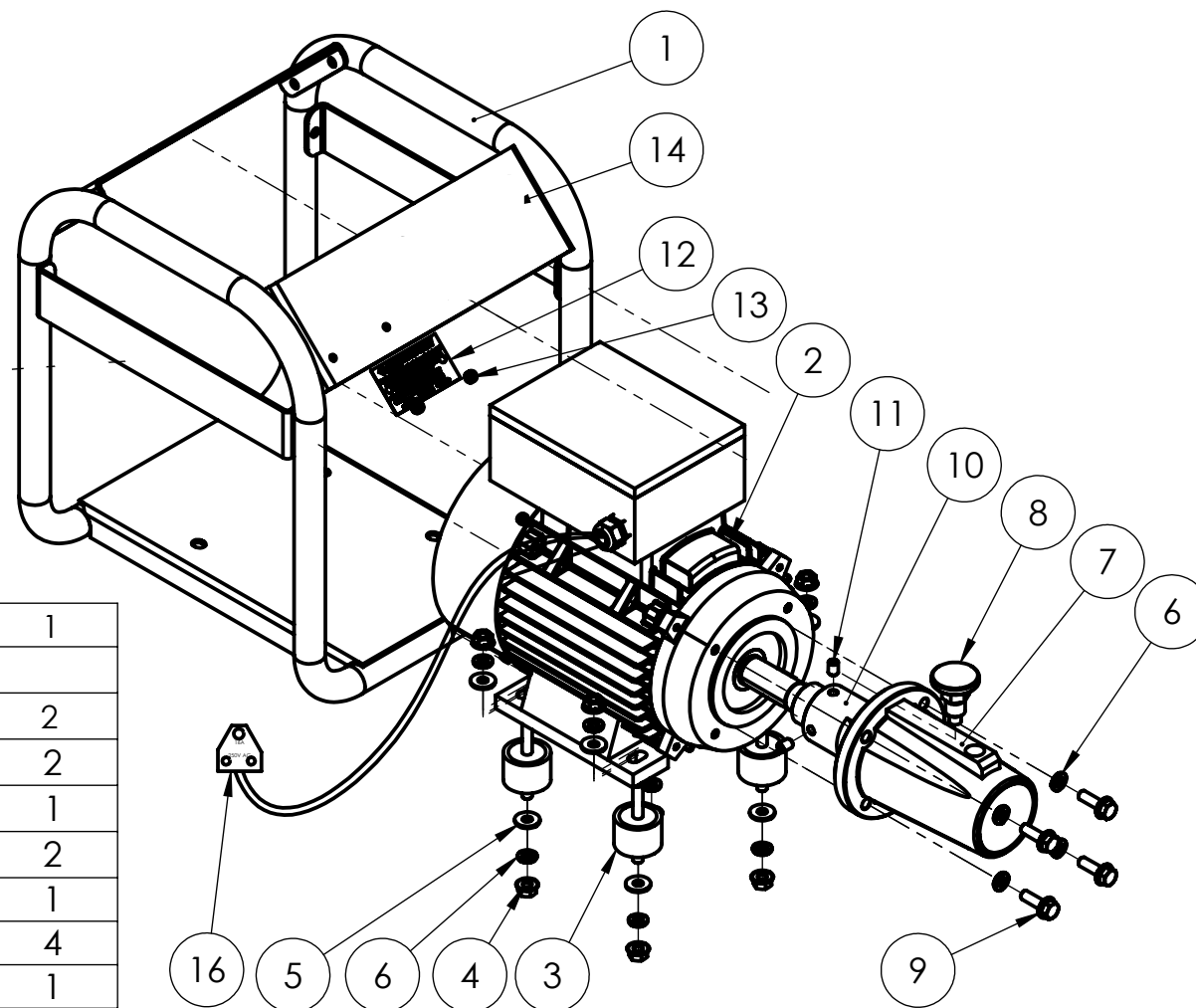
Liability for this machine is accepted only when the machine is defective from the outset. Liability is reduced or nullified in the event that the user fails to comply with the operating and maintenance instructions and uses spare parts which are not guaranteed.

Contents

Drive Unit DU ELECTRIC Assy. ----- 7-9

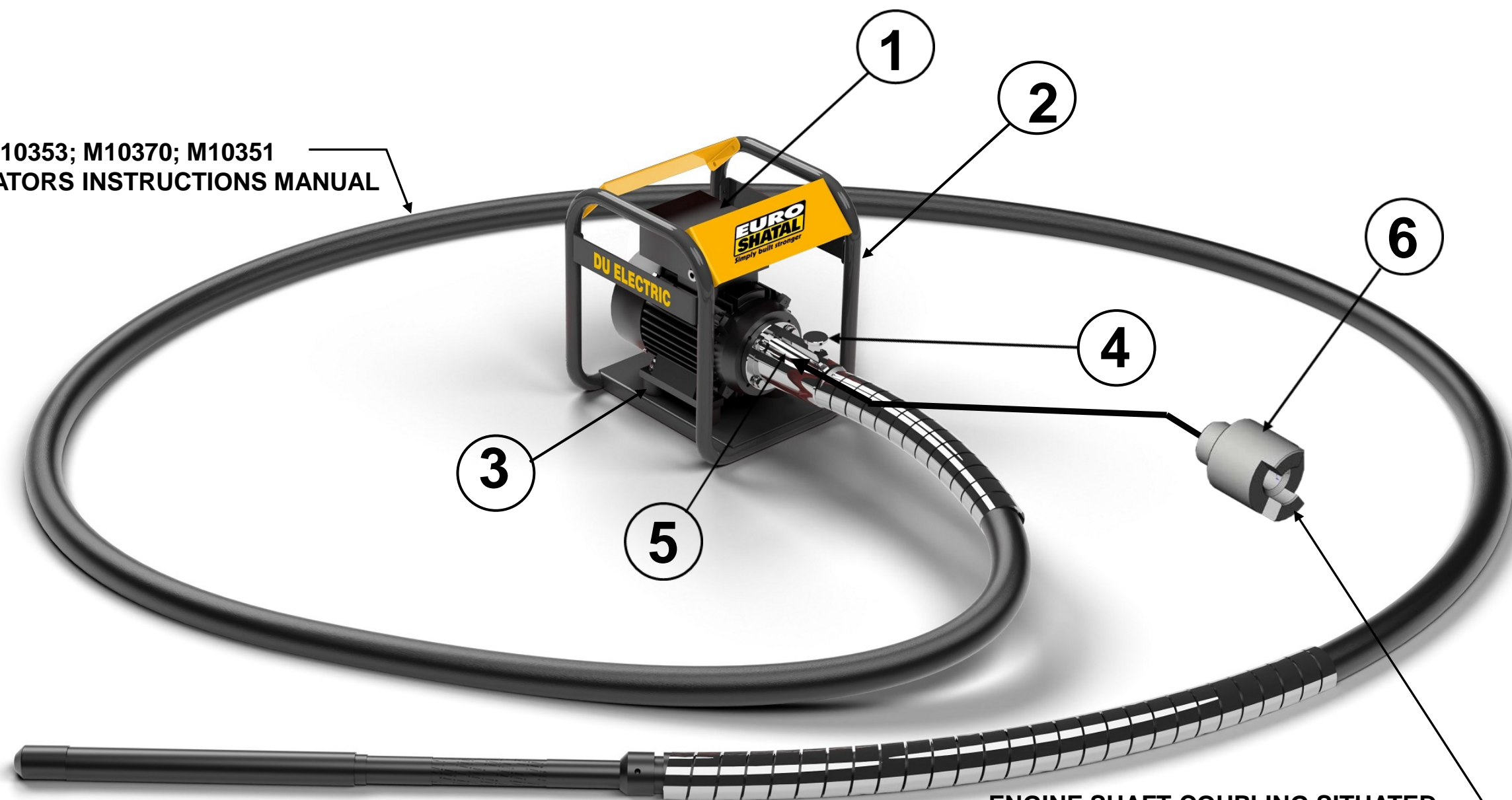


DRIVE UNIT ASSEMBLY
DU ELECTRIC
FIRST EDITION MAY 2023



16	115612	3 PIN PLUG 16A,250V AC	1
14	Z000000655	EURO SHATAL STICKER	2
13	321948	RIVET Ø5	2
12	Z000000430	NAME PLATE	1
11	321941	SET SCREW_M8x10	2
10	100014	COUPLING D Ø20-5 KEY	1
9	1171916	HEX BOLT M8X25 ZINC PL.	4
8	10095	KNOB	1
7	1000411	PIPE HOLDER	1
6	1171902	SPRING WASHER M8	12
5	115903	PLAIN WASHER M8	8
4	115901	FLANGE HEX NUT M8	8
3	30406	RUBBER MOUNT	4
2	I50591	MOTOR 3HP	1
1	1000515	CAGE WELDMENT	1
ITEM NO.	PART NO	DESCRIPTION	QTY.

M10353; M10370; M10351
SEE VIBRATORS INSTRUCTIONS MANUAL



ENGINE SHAFT COUPLING SITUATED
INSIDE OUTER COUPLING PART



**ELECTRIC DRIVE UNIT ASSEMBLY
DU ELECTRIC**

NO.	DESCRIPTION	PART NO.	QTY.
1	ELECTRIC MOTOR 3HP	I50591	1
2	FRAME	1000515	1
3	ANTIVIBRATION MOUNTING	30406	4
4	COUPLING RETAINER	10095	1
5	OUTER COUPLING	1000411	1
6	ENGINE SHAFT COUPLING	100014	1