

ENGLISH

OPERATING INSTRUCTIONS & SPARE PARTS LIST DIESEL DRIVE UNIT DU GREAVES



M100040.G - DU GREAVES

MAY 2023



LIMITED WARRANTY

We warrant that this product is **free from defects in material or workmanship** under normal use and maintenance. Certain components, such as normal wear parts and engines are excluded from this warranty. We will, at our option, repair or replace any defective product or part covered by the Limited Warranty, free of charge at any authorized Servicing Dealer/Center using original replacement parts, subject to the limitations and exclusions described below.

Limited Warranty period: We will warrant the product to the original retail purchaser from the date of retail purchase for 12 month.

Battery: Lead Acid Batteries only: 180 days

This Limited Warranty does not cover:

- (a) Engines; a separate warranty provided with your product might apply.
Engines are warranted by the engine manufacture
- (b) Normal wear parts (parts and items that normally wear out with use), including without limitation spark plugs, bulbs, filters, lubricants, starter cords, belts, rubber parts, blades, and blade adapters are not covered, nor is damage due to normal wear, natural discoloration of materials, or dulling or damage to blades due to contact with abrasives, rocks, rods, or other foreign objects.
- (c) Damage related to abuse, misuse, neglect, modifications, alterations, use of unauthorized attachments, improper storage, or lack of lubrication or engine failure due to the use of oils that do not meet engine manufacturer's specifications, pressure cleaning or steam cleaning the product, excessive dirt, abrasives, salt water, moisture, corrosion, rust, or varnish.
- (d) Failure to perform required maintenance as described in the operator's manual will void this warranty.
- (e) Damage or failures due to improper set up, pre-delivery service or repair service by anyone other than an authorized servicing dealer during the warranty period.

To preserve your rights under this Limited Warranty, you must exercise reasonable care and use of the product, including following the preventive maintenance, storage, and fuel and oil usages as prescribed in the operator's manual.

In addition, you must cease using the product immediately upon any failure or damage, and take the product to an authorized servicing dealer prior to any further use.

WARRANTY EXCLUSIONS, DISCLAIMERS, AND LIMITED RIGHTS. WE WILL NOT BE LIABLE FOR ANY INCIDENTAL OR CONSEQUENTIAL DAMAGES. YOUR REMEDY IS LIMITED TO REPAIR OR REPLACEMENT OF THE PRODUCT OR PART, AT OUR DISCRETION. THERE ARE NO EXPRESS WARRANTIES OTHER THAN THOSE SET FORTH HEREIN. ANY WARRANTY IMPLIED BY STATE LAW (WHETHER OF MERCHANTABILITY OR FITNESS FOR A PARTICULAR USE OR OTHERWISE) IS HEREBY DISCLAIMED; WHERE SUCH A DISCLAIMER IS NOT PERMITTED BY LAW, THEN SUCH IMPLIED WARRANTY IS LIMITED FOR THE DURATION OF THE APPLICABLE LIMITED WARRANTY PERIOD. THIS LIMITED WARRANTY GIVES YOU SPECIFIC LEGAL RIGHTS, AND YOU MAY ALSO HAVE OTHER RIGHTS BASED ON YOUR LOCALITY.

How to obtain service. To obtain warranty service, you must take your product to an authorized Servicing Dealer/Center.

Any costs to transport or ship the product are your responsibility. You must present proof of purchase (including date, product model and serial number) to an authorized Servicing Dealer/Center for warranty service. Proof of purchase rests solely with you.

EURO SHATAL ApS

Head Office: Murervej 5, DK-6710 Esbjerg V, Denmark

Phone: (45) 75 168411 - Fax: (45) 75 168412 – E-Mail: euroshatal@shatal.com



GREAVES models

INSTRUCTION FOR STORAGE

Temporary Protection (1 to 6 month)

- Run engine at low idle for at least 15 minutes.
- Fill crankcase with protection oil MIL-1-644-P9- and run the engine at 3/4 maximum speed for 5-10 minutes.
- With engine hot, drain oil and fill with normal oil.
- Remove fuel line and drain tank.
- Dismantle fuel filter, replace element if dirty.
- Clean thoroughly – cylinder and cylinder head fins.
- Seal all openings with adhesive tape.
- Remove injector, pour a tablespoon of SAE 30 oil in cylinder and turn crankshaft to spread oil. Reassemble injector.
- Spray SAE 10 W oil in exhaust and intake manifolds, rocker arms, valves, tappet and protect unpainted parts with grease.
- Wrap engine in a plastic sheet.
- Store engine in a dry place, possibly off the ground and away from high power lines.

Permanent Protection (over 6 month)

After following the same procedure as above, we recommend taking the following precautions.

- Treat lubrication and injection system, and all moving parts with anti-rust oil with MIL-L-21260 P10 Grade 2, SAE 30 Characteristics (such as ESSO Rust-Ban 339, Valvoline Tectyl 873) by turning engine and discharging excess anti-rust compound.
- Coat all external unpainted parts with an anti-rust product with MIL-C-1617C-3 Grade 3 characteristics (Such as ESSO Rust-Ban 392: Valvoline Tectyl 894).

Return to service

- Clean exterior.
- Remove protections and covers.
- Remove anti-rust products from exterior with appropriate solvent or grease solvent.
- Dismantle injector fill with normal engine oil and turn crankshaft a few times.
- Remove oil sump and remove oil containing protect agent.
- Check injector calibration, valve clearance, cylinder head torque, oil filter and air cleaner. If engine has been stored for a long period (over six months) inspect one bearing for possible corrosion marks.
- Make normal pre-starting checks before starting engine.

EURO SHATAL ApS

Head Office: Murervej 5, DK-6710 Esbjerg V, Denmark

Phone: (45) 75 168411 - Fax: (45) 75 168412 – E-Mail: euroshatal@shatal.com

SUMMARY
DRIVE UNIT DU GREAVES



CE DECLARATION -----1

SAFETY RULES2;3

OPERATION -----4

INSTRUCTION FOR ORDERING PARTS -----5

DRIVE UNIT ASSEMBLY ----- 6;7

SPARE PART LIST -----8



ENGLISH



CE DECLARATION OF CONFORMITY

We hereby declare that the equipment described below conforms to the relevant fundamental safety and health requirements of the appropriate CE Directives, both in its basic design and construction. This declaration will cease to be valid if any modifications are made to the machine without our expressed approval.

Product: Drive Unit Models : DU GREAVES

Relevant CE Machinery Safety Directives : (89/392/EEC)

amended by 91/368/EEC, 93/44/EEC, 2004/108/EC ,EN500-1, EN500-4

Appropriate internal measures have been taken to ensure that series-production units conform at all times to the requirements of current CE Directives and relevant standards.

The signatories are empowered to represent and act on behalf of the company's management.

**Murervej 5
DK-6710 Esbjerg V , Denmark
Tel:(+45) 75168411
Fax: (+45)75168412
E-mail:euroshatal@shatal.com**

GENERAL MANAGER



SAFETY INSTRUCTION-QUICK GUIDE

DRIVE UNIT DU GREAVES



Use unleaded fuel only, for gasoline engines.



Users should carefully follow any operating instructions given.



. Hearing protection must be worn.



Foot protection must be worn.



Ensure that the vibrator does not come into contact with fixed surfaces.
Ensure that the flexible tube does not come into contact with hot or sharp surfaces.



Stay Alert! Watch what you are doing.
Use common sense.
NEVER operate the vibrator motor when you are tired or while under the influence of drugs, alcohol, or medication.



Replace worn or damaged parts with replacement parts designed and Recommended for use by Euro Shatal.



Any servicing, other than that covered in this instruction manual, should be performed by an authorized Euro Shatal Service Representative.



Do not operate the machine in closed places and inflammable environments.



Operate the machine only with good lighting conditions.



Do not touch hot surfaces.



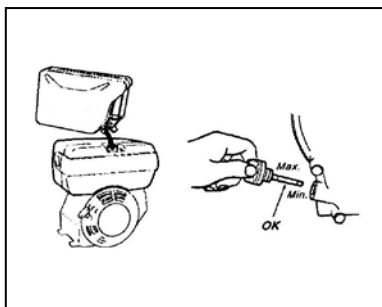
Store in a dry place, not accessible to children. Maintain the tools carefully.

OPERATION

Technical Data

Motors		Diesel
Voltage (AC)	V	NA
Current (Maximum)	A	NA
Frequency	Hz	NA
Power	Hp	5.5 Hp
Speed (No-load)	rpm	3600
Motor	type	Greaves 1520
Phase		NA
Weight	Kg. (lbs.)	59 kg

BEFORE STARTING :



1. Fill fuel tank.
2. Check oil level in engine crankcase and top up if necessary use the type of oil according to the manufacturer's instructions.

MACHINE OPERATION :

1. Run the engine at slow speed.
2. Raise the knob on the aluminum housing. Push the vibrator coupling into the housing and then release the knob.
3. Ensure that the vibrator is securely held by the housing
4. Move the throttle to maximum speed. If the vibrator does not vibrate hit the end of the vibrator on the floor until it vibrates.
5. The vibrator must always be vibrating while in the concrete.
Do not stop the vibrator while it is in concrete.

Please State Machine Details in the Following Sequence:

- ☐ **Machine Serial Number**
- ☐ **Part Number, Description and Quantity of Parts**
- ☐ **Full Delivery Address**

Manufacturers Liability and the Use of Genuine Spare Parts

Liability for this machine is accepted only when the machine is defective from the outset. Liability is reduced or nullified in the event that the user fails to comply with the operating and maintenance instructions and uses spare parts which are not guaranteed.

Contents

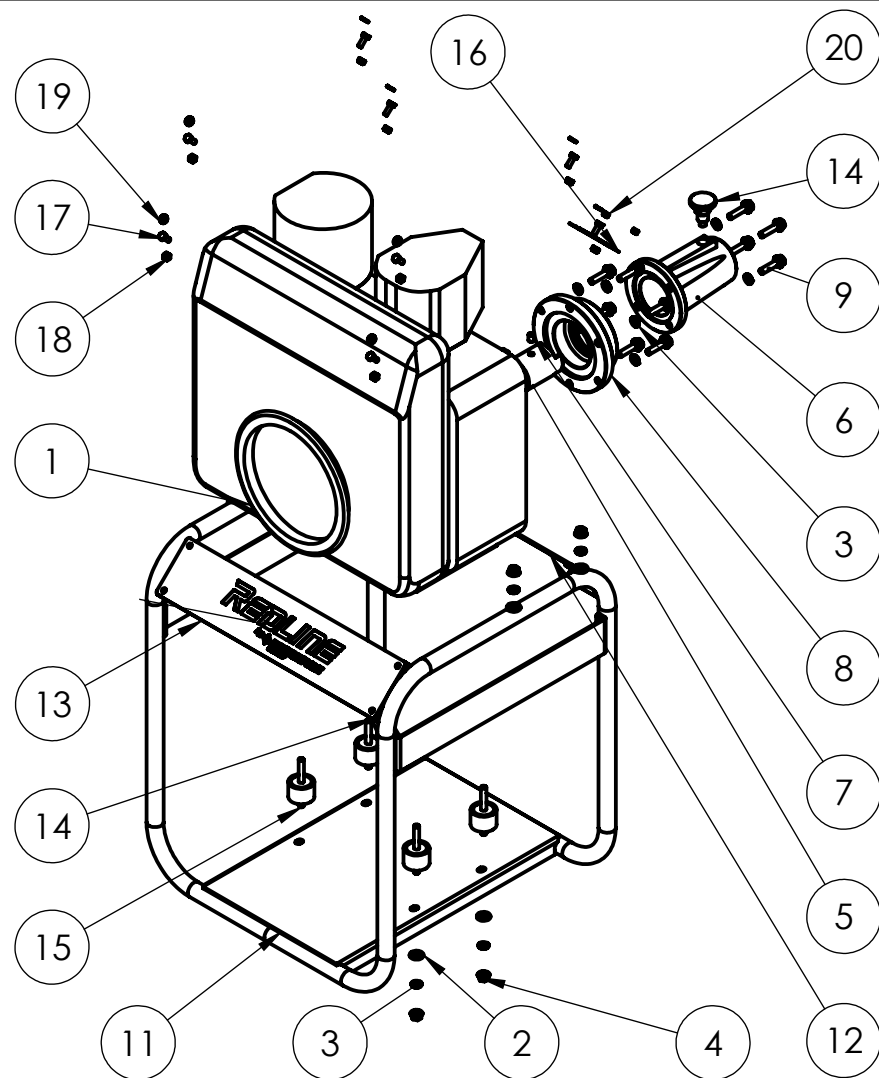
Drive Unit DU GREAVES Assembly ----- 6-8



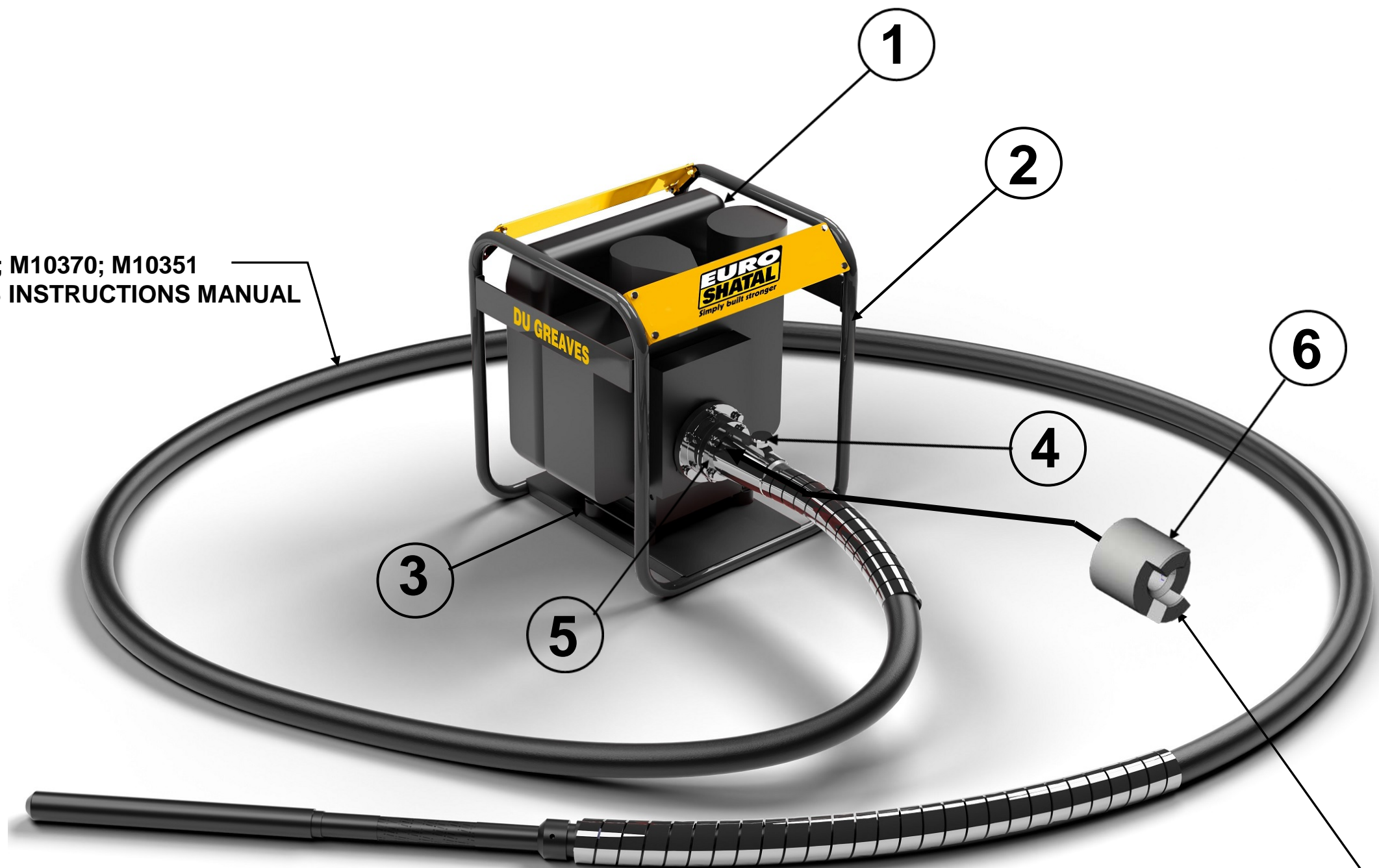
DRIVE UNIT ASSEMBLY DU GREAVES

FIRST EDITION MAY 2023

20	321948	BLIND RIVET Ø5X16	2
19	1171909	SPRING LOCK WASHER M6 ZINC PLATE	8
18	313967	HEX NUT M6 ZINC PLATED	8
17	1171914	HEX HEAD SCREW M6X16 ZINC PL.	8
16	Z000000430	NAME PLATE	1
15	30406	ANTI VIBRATION MTG 40 SHOR JIP LONG	4
14	10095	KNOB LOCKING	1
13	1000512	TOP PLATE - NO HOLE	1
12	1000511	TOP PLATE - HOLE	1
11	1000510	CAGE GREAVES	1
9	31520929	HEX HEAD SCREW M8X30 ZINC PL.	10
8	1000413	FLANGE	1
7	321941	HEX SOC. SET SCR.W.CONE POI M8x10	2
6	1000411	PIPE HOLDER	1
5	1000412	COUPLING	1
4	115901	HEX NUT M8 ZINC PLATED	8
3	1171902	SPRING LOCK WASHER M8 ZINC PLATE	18
2	115903	PLAIN WASHER 21X9X3 ZINC PLATED	18
1	I50480	GREAVES 1520 DIESEL 5HP	1
ITEM NO.	PART NO	DESCRIPTION	QTY.



M10353; M10370; M10351
SEE VIBRATORS INSTRUCTIONS MANUAL



ENGINE SHAFT COUPLING SITUATED
INSIDE OUTER COUPLING PART



DIESEL DRIVE UNIT ASSEMBLY
DU GREAVES

NO.	DESCRIPTION	PART NO.	QTY.
1	DIESEL ENGINE GREAVES 1520 5HP	I50480	1
2	FRAME	1000510	1
3	ANTIVIBRATION MOUNTING	30406	4
4	COUPLING RETAINER	10095	1
5	OUTER COUPLING	1000411	1
6	ENGINE SHAFT COUPLING	1000412	1